

FLUPINEX-PLUS TABLETS

Flupirtine Maleate 100 mg + Paracetamol 325 mg

"Dual Action: Central & Peripheral Pain Control"

Marketed by: Human Orthocare

A Subsidiary of Human Biolife India Pvt. Ltd.

www.humanorthocare.com





Product Overview



Composition (per tablet):

Flupirtine Maleate

100 mg

Centrally acting non-opioid analgesic with muscle relaxant action

Paracetamol

325 mg

Peripheral & central analgesic with strong antipyretic effect



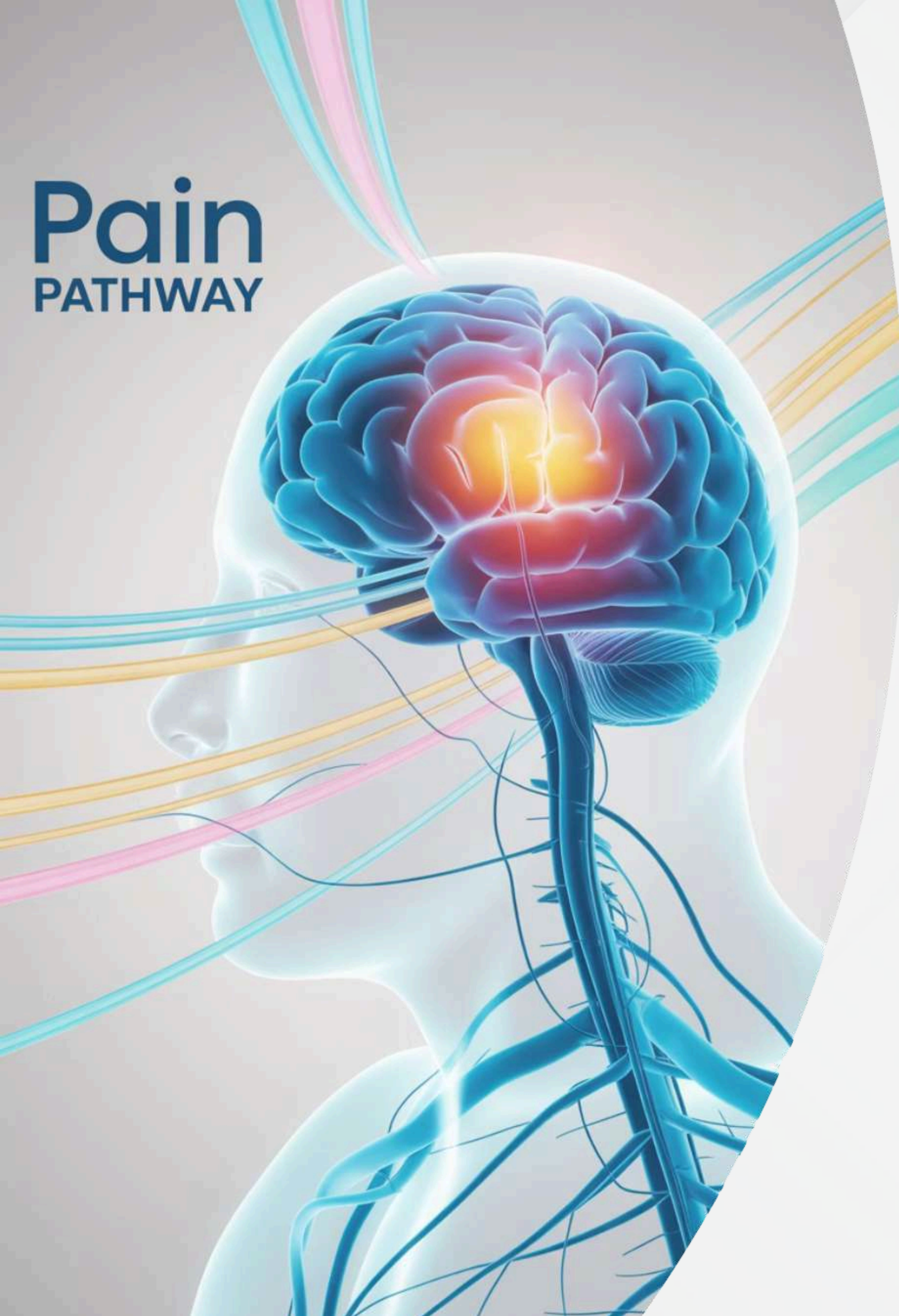
Dual Synergy

Stronger pain relief compared to monotherapy through combined mechanisms



Comprehensive Coverage

Effective in acute, chronic and neuropathic pain conditions

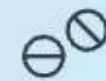


Mechanism of Action



Flupirtine Action

- Selective neuronal potassium channel opener (SNEPCO)
- Indirect NMDA receptor antagonist → prevents central sensitisation
- Provides both analgesia & muscle relaxation



Paracetamol Action

- Centrally inhibits prostaglandin synthesis
- Rapid onset analgesic & antipyretic effects



Combined Result

Comprehensive dual pain control: central + peripheral

Indications

Flupinex-Plus Tablets are recommended for:

Musculoskeletal Conditions

- Chronic back pain
- Spondylosis
- Fibromyalgia & myalgia

Arthritis Management

- Osteoarthritis
- Rheumatoid arthritis

Neuropathic Pain

Various neuropathic pain syndromes



Post-Procedural Pain

- Post-traumatic pain
- Post-operative pain

General Pain Management

- Dental pain
- Headache management

Clinical Advantages

Key Benefits of Flupinex-Plus:



Dual Mechanism

Broader and stronger analgesia through combined central and peripheral action



Safety Profile

Non-opioid, non-NSAID formulation with safer gastric and renal profile



Comprehensive Relief

Provides both pain relief and muscle relaxation in one tablet



Versatile Application

Effective in acute, chronic and neuropathic pain conditions



Patient Compliance

Better patient compliance compared to multiple drug therapy

Comparison with Conventional Analgesics

Parameter	Flupinex-Plus (Flupirtine + PCM)	NSAIDs Alone	Opioids
Analgesic Effect	✓ Strong (Central + Peripheral)	✓ Moderate	✓ Strong
Muscle Relaxation	✓ Yes (Flupirtine)	✗ No	⚠ Mild
GI/Renal Toxicity	✓ Minimal	✗ High	✓ Low
Dependence Risk	✗ None	✗ None	⚠ High
Neuropathic Pain Use	✓ Effective	✗ Limited	⚠ Variable

Dosage & Administration



Standard Dosage

1 Tablet 2–3 times daily

Maximum: 400 mg Flupirtine per day



Medical Guidance

Or as directed by physician



Important: Monitor liver function in long-term therapy (Flupirtine + PCM combination)



Safety & Tolerability

Generally Well-Tolerated

Possible Side Effects:

- Drowsiness, dizziness, fatigue (dose-related)
- Nausea or mild GI upset
- Rare: hepatotoxicity → requires monitoring in long-term use

Contraindications:

Hepatic Conditions

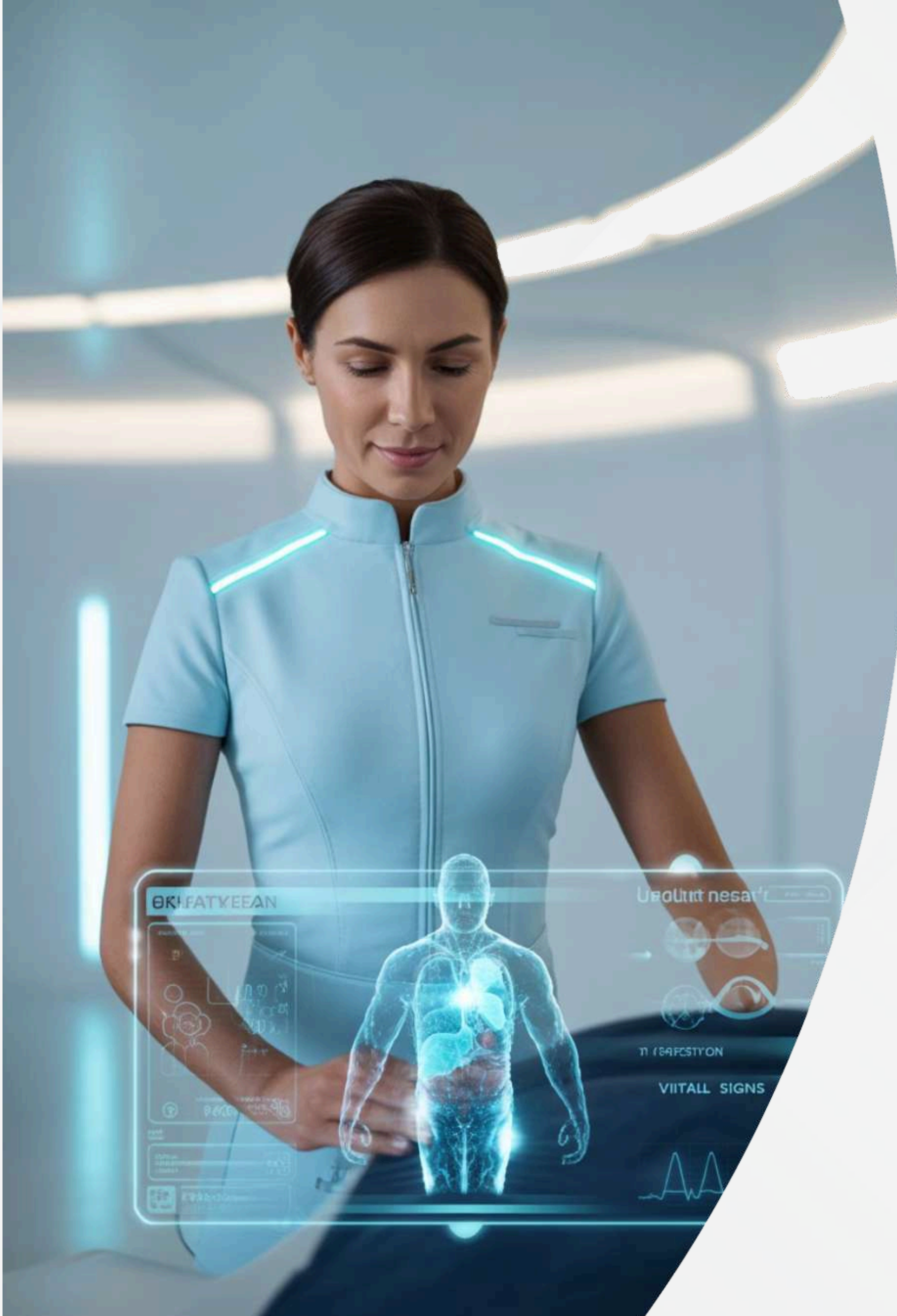
Severe hepatic impairment

Substance Use

Alcohol abuse or hepatotoxic drug use

Special Populations

Pregnancy & lactation





Why Prescribe Flupinex-Plus?

Doctor's Choice For:



Superior Efficacy

Stronger pain relief compared to Flupirtine or PCM alone



Dual Action

Effective dual central + peripheral analgesic action



Versatile Application

Effective in both acute & chronic pain syndromes



Multiple Benefits

Provides muscle relaxation + antipyretic benefit



Trusted Brand

Trusted formulation from Human Orthocare



**Human
Ortho Care**

A SUBSIDIARY OF HUMAN BIOLIFE INDIA PVT. LTD.

Contact Us

Step into care that moves you forward.

Use with clinical discretion, especially in high-risk orthopedic conditions.

HumAn Orthocare – A Subsidiary of Human Biolife India Pvt. Ltd.

For medical queries or collaboration:



www.humanorthocare.com